

FIFTH SEMESTER DIPLOMA EXAMINATION IN ARCHITECTURE —
MARCH, 2015

ARCHITECTURAL DRAWING — III

[Time : 4 hours

(Maximum marks : 100)

- [Note :— 1. Drawing shall be neat and fully dimensioned.
2. Missing data can be suitably assumed.
3. Two Nos. A1 size tracing sheets and butter sheets are to be supplied.]

Marks

PART—A

(Maximum marks : 10)

I Answer the following questions in one or two sentences. Each question carries 2 marks.

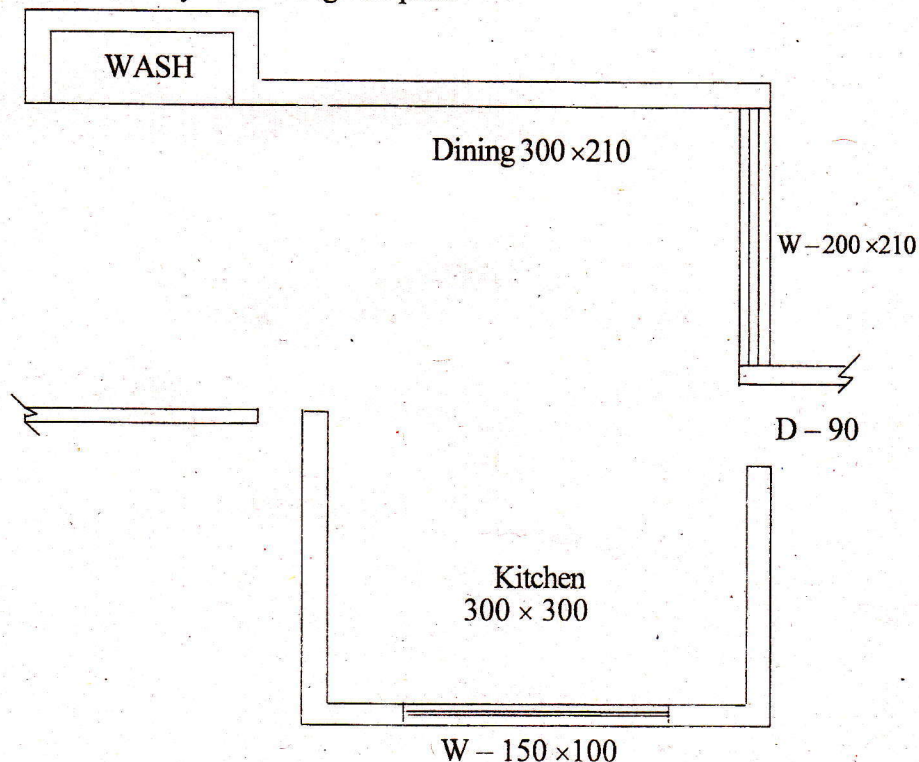
1. What is site plan ?
2. Write the minimum parking space required for a motor car, two-wheeler and cycles.
3. What is a mezzanine floor ?
4. Write the minimum setbacks required for a residential building.
5. Define carpet area.

(5×2=10)

PART—B

(Maximum marks : 20)

II Draw the Interior layout of the given plan.



20

PART—C

(Maximum marks : 70)

- III A professional college requires a ladies hostel to accommodate 180 students with the following minimum requirements :

Lobby	—	20sq.m.
Visitors room for 15 persons		
Office room	—	15sq.m.
Warden's room/Toilet	—	20sq.m.
Matron's room	—	10sq.m.
Room for single accommodation	—	7.5sq.m.(30 Nos.)
Room for double accommodation	—	12sq.m.(35 Nos.)
Room accommodating 4 students	—	25sq.m.(20 Nos.)
Reading room and library	—	20sq.m.
Room for recreation	—	40sq.m.
Dining hall	—	80sq.m.
Kitchen, store, work area and pantry	—	50sq.m.

Porch, toilets, washes area, parking area etc. may be suitably provided.

Plan	1:100	35
Elevation	1:100	15
Section	1:100	20