

DIPLOMA EXAMINATION IN ENGINEERING/TECHNOLOGY/MANAGEMENT/
COMMERCIAL PRACTICE, OCTOBER 2017.

WORKING DRAWING-III

(Maximum Marks : 100)

(Time : 3 Hrs)

- [Note:- 1. Assume any missing data.
2. Two numbers of drawing sheets to be supplied.
3. All drawings shall be neat and fully dimensioned and
Sketch on next page]

PART-A

(Maximum marks: 10)

Marks

- I. Answer all questions in one or two sentences. Each question carries 2 marks.
1. What is cladding?
 2. What is false ceiling?
 3. Differentiate between one way switch and two way switch.
 4. What is meant by doubly reinforced beam?
 5. Specify the minimum coverage that should be provided in a RCC column.
- [5x2 =10]

PART - B

(maximum marks : 30)

- II Answer any three of the following questions . Each question carries 10 marks.
1. Draw the longitudinal section of a simply supported beam of size 22cm x30cm. The clear span of beam is 360cm. It is provided with 3 nos. of 10mm dia bars at the bottom, 2 nos of 8mm dia. bars at the top and 6mm dia. Stirrups @ 200mm c/c.
 2. Draw the sections of suspended ceiling with the following edge configurations.
(i) Reveal edge (ii) Bevel reveal edge.
 3. Draw electrical lay out for a kitchen of size 420cm x 360cm to a scale of 1:50.
 4. Draw a section of a partition using glass blocks.

[3x10 =30]

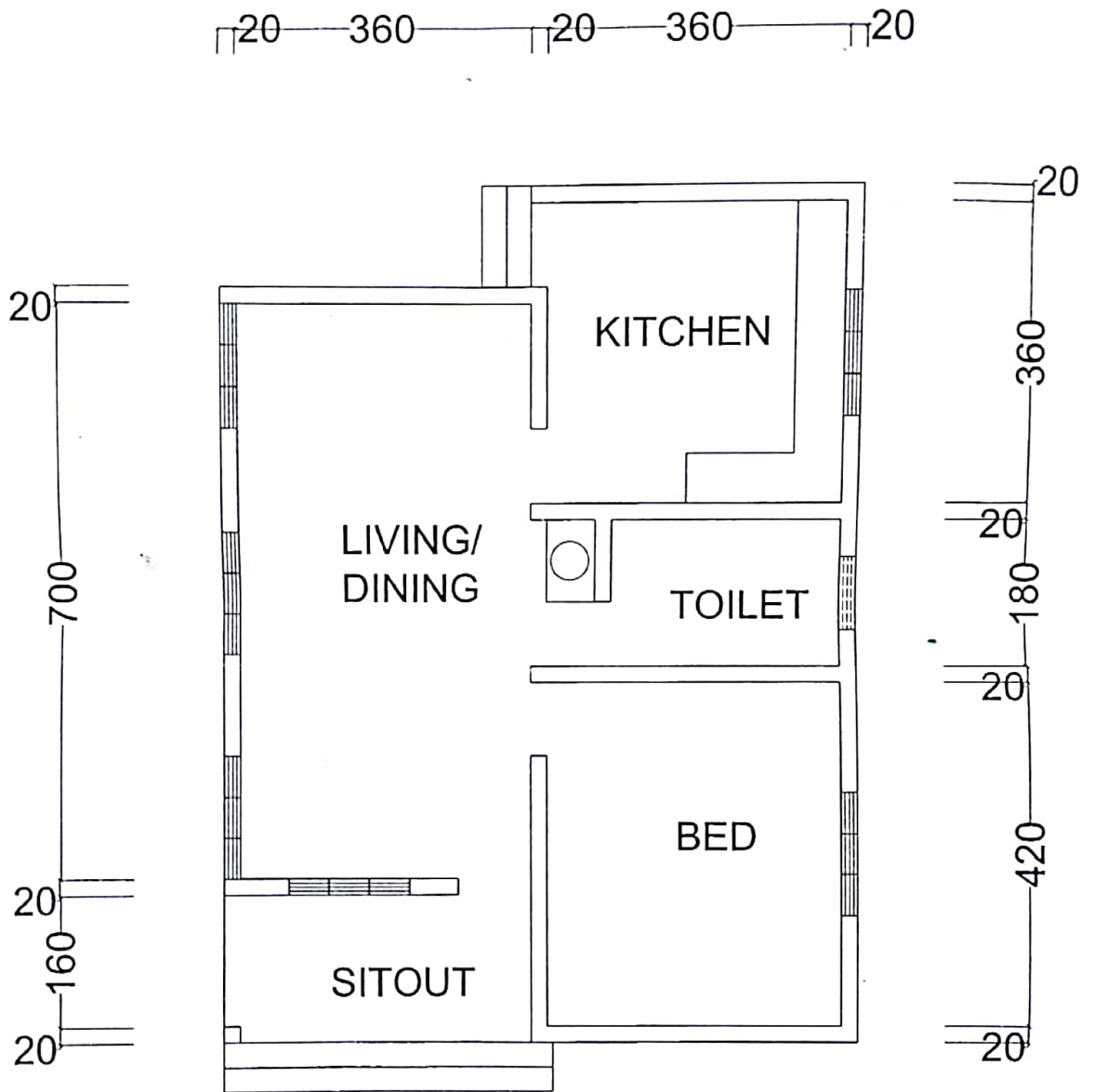
PART - C

(Maximum marks : 60)

(Answer the following questions. Each question carries 30 marks)

- III Draw the electrical layout of the residential building given in fig.
Furniture details need not be shown. [30]
- IV Draw the plan and sectional elevation of a square footing for an RCC column
showing the reinforcements in the footing and in the column.
Footing - 160cm x 160cm size. Depth 20cm, 14 nos. of 10mm dia. bar in
both directions.
Column - Size 30cm x 30cm. Main bars 4 nos 16mm dia. Lateral ties 8mm
dia. @ 15cms C/C. [30]
-

FIG -1



All dimensions are in cms